



Corporate  
**Renaissance**  
Group



*The Complete Activity-Based  
Costing/Management Solution*

[www.crgroup.com](http://www.crgroup.com)

# FlexABM<sup>®</sup>

Complete  
Activity-Based  
Costing/Management

Explore All Great  
CRGroup Solutions

Data Automation or Dynamics GP

Changer (CfMD)

PA Tools

Re-Formatter

Reverser

Merger Series

Linker Series

Company Combiner

AA Tools

Financial Planning and Analysis

Cost Allocator (CfMD)

BI Cubes

Employee Performance Management

emPerform

Contact Us

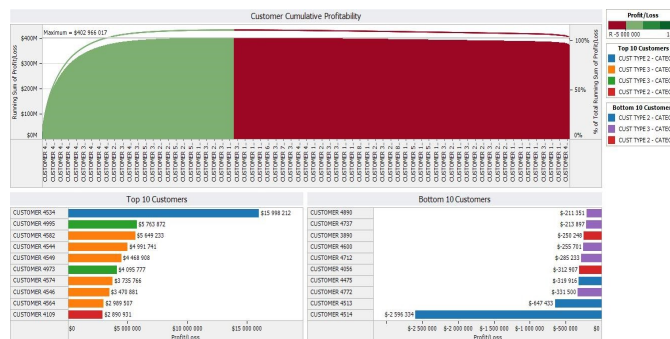
613.232.4295

[crg@crgroup.com](mailto:crg@crgroup.com)

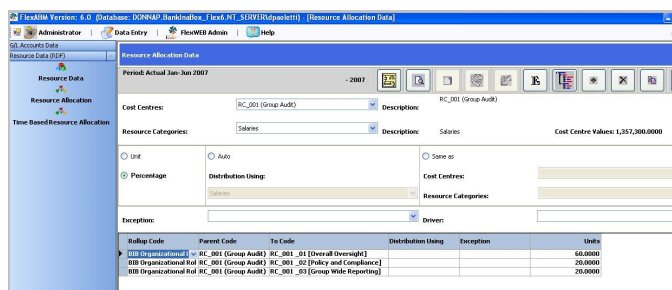
## What is FlexABM?

FlexABM is the result of Corporate Renaissance Group's years of extensive experience in implementing ABC and ABM management systems for enterprises of all sizes, in all industries and sectors. FlexABM delivers proven and easy-to-use enterprise-wide ABC/M that identifies the true cost of all activities and provides decision makers with the analytical tools, models, and methodologies to effectively evaluate business processes. FlexABM's unique ability to perform full reciprocal costing, advanced data modeling, and dynamic reporting makes it the complete ABC/M solution. With a low cost of ownership and effortless implementation, FlexABM provides the quickest possible return on your ABC/M investment.

- Full reciprocal costing
- Rapid return on investment
- Cost-effective implementation
- Responsive and flexible modeling and design
- Grouping/tagging and multiple roll-up functionality
- A powerful ability to run 'what if' scenario planning
- Multi-dimensional drill down reporting and analysis



Use any OLAP compliant business intelligence tool create your own dashboards.



The screenshot shows the 'Resource Allocation Data' window in FlexABM. It displays a table with columns for 'Period Actual Jan-Jun 2007', 'Cost Centre', 'Description', 'Resource Categories', and 'Cost Centre Values'. The table lists various cost centers and their associated resource categories and values.

Period Actual Jan-Jun 2007	Cost Centre	Description	Resource Categories	Cost Centre Values
2007	RC_001 (Group Audit)	RC_001 (Group Audit)	Salaries	1,357,300,000
	Unit	Auto	Same as	
	Percentage	Distribution Using	Cost Centres	
		Exception	Resource Categories	
	Exception	Driver		
	Policy Code	Parent Code	Tx Code	Units
	010 (Organizational)	RC_001 (Group Audit)	RC_001_01 (Overall Oversight)	60,000
	010 (Organizational)	RC_001 (Group Audit)	RC_001_02 (Policy and Compliance)	20,000
	010 (Organizational)	RC_001 (Group Audit)	RC_001_03 (Group Wide Reporting)	20,000

## Why Activity-Based Management?

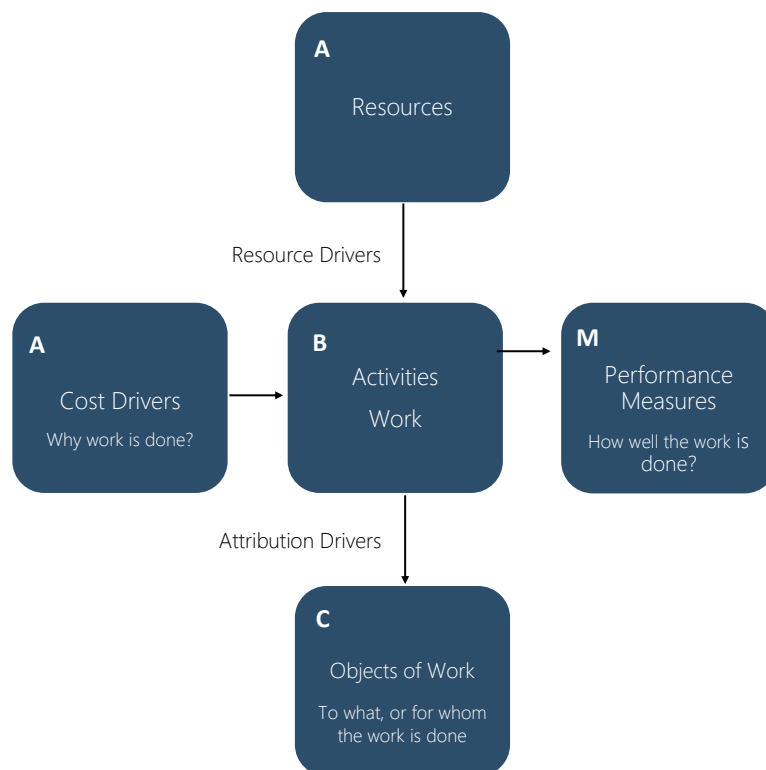
Activity-based management (ABM) draws on ABC as its major source of information. By associating cost information with quality standards and cycle time, organizations can make decisions directly related to overall performance.

## Why Activity-Based Costing?

To make better business decisions, you need to understand the profitability of each of your products, services, and/or clients. To do that, you have to know the true cost of all your activities. By accurately tracing individual activity costs, activity-based costing (ABC) corrects the inaccuracies of traditional accounting systems.

"FlexABM has enabled us to effectively manage and value the large number of transactions we generate as well as provide accurate project costs and profitability analysis."

G. Andrew Hoggarth, VP Corporate and Financial Services  
Peterborough Utilities Services Inc.



## Adaptable and Advanced Modeling

FlexABM provides intuitive costing of activities and processes, and is ideally suited to any sized enterprise or industry segment - large or small, financial or non-financial, private or public sector. By utilizing a familiar 'drag and drop' tree structure, grouping and tagging, and roll-up functionality, data modeling is uncomplicated, yet extremely advanced.

- Unlimited modeling elements
- Group and tag activities with multiple roll-ups
- Multi-level activity assignments and cost objects
- Automatic attributions and activity driver weighting
- Generate complete and detailed models that accurately express expenditure and use of resources across an organization

## Dynamic and Secure Exploration and Presentation

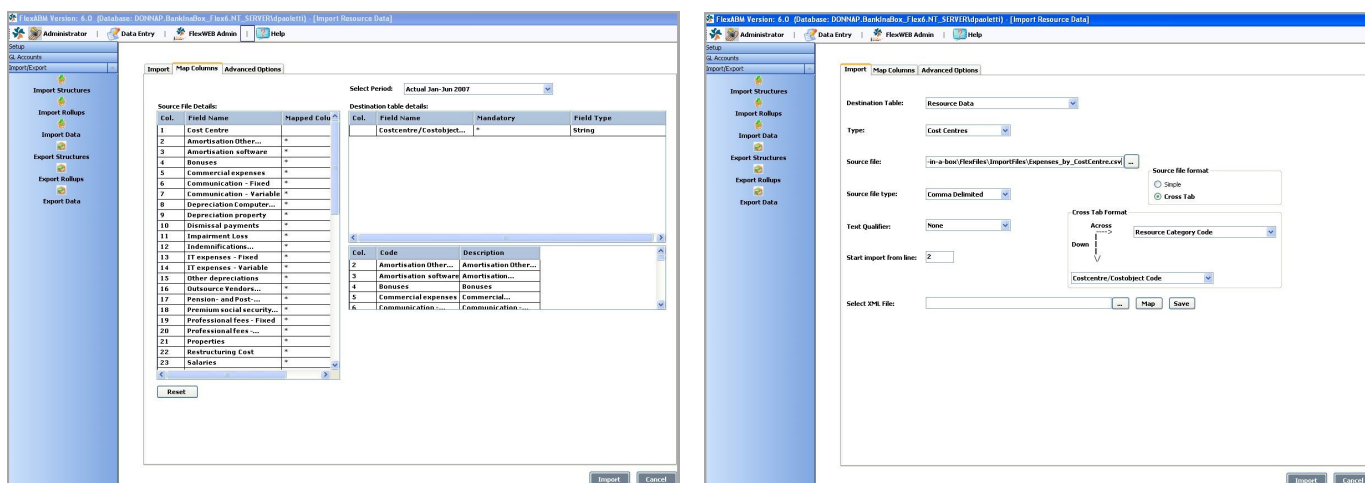
By seamlessly integrating with any OLAP compliant tool for dynamic presentation and reporting, FlexABM provides the ultimate in data analysis. Users can access critical data in order to better understand business performance and facilitate superior decision making. Results can be explored with the click of a mouse, in virtually any format imaginable. Performance measures, such as direct and indirect activity costs and product and client profitability, can be analyzed with ease by utilizing the powerful multi-dimensional OLAP data cubes generated by FlexABM.

- Standard reports, including activity dictionary and modeling structure
- Numerous graphical representations with multi-dimensional drill down reporting
- 'Print preview' and 'save' to multiple formats, including Excel and HTML

## Import and Integrate with Ease

With sophisticated, yet straightforward, 'import wizards', FlexABM allows you to effortlessly import the financial and operational data that is vital to the rapid and cost-effective implementation of any ABC/M system.

- Automatic data validation
- Integrate view/cost/quality/cycle time
- Incorporate cost as well as performance measures
- Populate models with data from a variety of existing operational sources

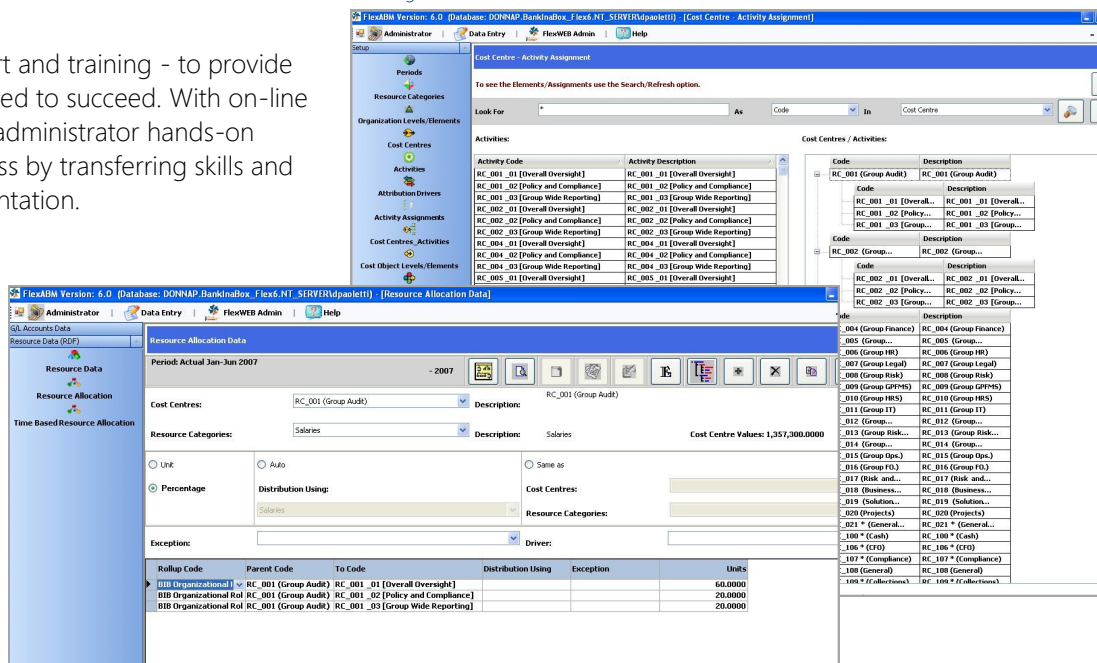


Import data with ease with simple drag and drop functionality.

## Support and Training

We have one objective for our support and training - to provide your company with everything you need to succeed. With on-line help, as well as end-user and system administrator hands-on training, CRGroup ensures your success by transferring skills and knowledge at every stage of implementation.

The user-friendly interface allows for rapid data modeling, effortless maintenance, and the building of 'information rich' data cubes.



## System Architecture

Client/Server (MS SQL Server) |  
Windows98, Windows NT 4.0,  
Windows2000, Windows XP,  
Windows7 | ASP hosting available

[www.crgroup.com](http://www.crgroup.com)

## About Corporate Renaissance Group

Corporate Renaissance Group (CRGroup) has been providing innovative business solutions for more than 26 years. With expertise in corporate finance, competitive analysis, knowledge creation and software development, CRGroup gives clients a competitive advantage by enabling the cost-effective and efficient transformation of enterprise data and knowledge into business-critical information.

CRGroup is partnered with industry leaders such as Microsoft® and Tableau Software, and has thousands of satisfied customers worldwide. Products include a comprehensive suite of activity-based costing, performance measurement and business management applications, which can be purchased from a global network of more than 500 partners.

CRGroup a truly global company, headquartered in Ottawa, Canada, with offices in Canada (Halifax NS and Toronto ON), South Africa, India and the United States.

For more information about our products and services, please visit [www.crgroup.com](http://www.crgroup.com)



Corporate  
Renaissance  
Group

